



## PRODUCT CATALOG



**海奕激光**  
HAIYI LASER

**苏州海奕激光科技有限公司**  
Suzhou HaiYi Laser Technology Co., LTD

总机: 0512-57826058  
传真: 0512-50338742  
销售电话: 18136750108  
18994470782

邮箱: [laserhy@126.com](mailto:laserhy@126.com)  
网址: [www.laserhy.com](http://www.laserhy.com)

地址: 中国江苏苏州市吴中区  
甪直镇龚塘路399号14幢

Tel: (+86) 512-57826058

Fax: (+86) 512-50338742

Wechat/Whatsapp: +86 18994470782

E-mail: [Jeanyjin@laserhy.com](mailto:Jeanyjin@laserhy.com)

Website: [en.laserhy.com](http://en.laserhy.com)

Add: Building 14, No.399 Gongtang Road,  
Luzhi Town, Wuzhong District, Suzhou,  
Jiangsu, CHINA (215127)



苏州海奕激光科技有限公司保留本手册的版权，并保留在不另行通知的情况下更改本手册中包含的信息和规格的所有权利。Suzhou HaiYi Laser Technology Co., LTD reserves the copy right of this manual and reserves all the rights to change this information and specifications contained in this manual without prior notice.

## Our Customers



## Our Honors



# INZENTON

## CONTENT

- ★ Company Profile
- ★ Development History
- ★ Laser Welding Machine
- ★ Laser Cutting Machine
- ★ Laser Cleaning Machine
- ★ Laser Marking Machine

# Company Profile



The company was founded in 2003 and established the Haiyi laser brand in Shenzhen. It is dedicated to the research and development, production, sales and service of laser equipment. The company expanded its scale in 2009 and built a new production base in Suzhou. In 2010, it moved its headquarters to Suzhou, and owns the independent factory building now. Adhering to the business philosophy of "win-win with customers", the company leads the development of laser applications through continuous technological innovation and continues to provide customers with high-quality products and services.

With the experienced professional laser technology team and management team, the company has developed laser equipment with independent intellectual property rights: laser welding machine, laser marking machine, laser cutting machine, laser cleaning machine and other series of products and automatic supporting series, and is dedicated to providing comprehensive industrial laser solutions for global customers. The company has passed ISO9001 quality management system, SGS audit, TUV audit and other certifications. Its main products have passed the CE certification of the European Union and the FDA certification of the United States, and are exported to more than 100 countries in Europe, Africa, America, Asia and Oceania.

At present, the company has more than 60 inventions, patents and works. With its advanced technology and management, as well as its continuous innovation ability, the company won the national high-tech enterprise and was officially listed on the Jiangsu growth board stock-market (Code: 695626). At the same time, the company is also the postgraduate practice base of Hehai University, the director member unit of Jiangsu laser chamber of Commerce, the director member unit of Hubei laser chamber of Commerce, and the director member unit of Guangdong laser chamber of Commerce.

With a high quality level, robust performance, longer service life, high processing accuracy and high competitive price, makes more and more recognition, attention and trust on our equipment from our customers domestic and abroad. Over the years, we have continued to provide high-quality laser solutions and supporting services for many well-known brands, such as Huawei, Samsung, Bosch electronics, Thermos, Shanghai Volkswagen, BMW, CATL, Giant, Goodbaby, Foxconn, Daikin, Aux, Kaiquan Pump, Grundfos pump, Yuwell medical, Hafei group, China Railway, Lenovo Group, ASUS computer, etc.

## Vision:

Being a leading company in laser application

## Mission:

- High quality level
- Competitive laser equipment
- Professional and quick service

## Value:

- Being honest and trustworthy.
- Quality makes power.
- Continuous innovation.



# Development History

**2003**

Found in Shenzhen



**2005**

Flying Laser Marking Machine



**2008**

YAG Mold Laser Welding Machine



**2009**

YAG handheld laser welding machine



**2010**

Move to Suzhou



**2011**

3D dynamic Laser Marking Machine



**2013**

CNC Fiber laser welding machine



**2014**

Nanosecond laser welding machine



**2015**

Laser cutting machine



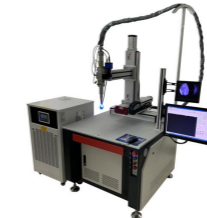
**2016**

Handheld laser welding machine



**2017**

ISO9001 quality management system



**2018**

National high-tech enterprise



**2019**

Successful listing



CO2 laser cutting machine

Laser cleaning machine

PCB laser cutting machine



**2020**

Vision System Laser Marking Machine



**2021**

Mini 3 in 1 function Handheld Laser Welding machine



**2022**

Lithium battery welding machine



New Building



2003 - 2023

# Laser Welding Machine



## WA Series - Handheld Laser Welding Machine

- Fiber laser. Power 1000W/1500W/2000W/3000W.
- Apply to metal welding, such as SS, Carbon Steel, Al, etc.
- High efficiency, flexible, cost saving and long service life.



Air Cooling



Model 1



Model 2

### Handheld Laser Welding Machine

3 IN 1  
Welding/Cleaning/Cutting



## WF Series - Robot laser welding machine

- Fiber laser. Power 1000W-6000W.
- Apply to metal welding, such as SS, Carbon Steel, Al, etc.
- Robot arm control, high efficiency, flexible, cost saving and long service life.
- Optional for ABB, YASKAWA (arm 1.4m,1.7m,2m), Chinese brand, etc.

## CF Series - Platform laser welding machine

- Fiber laser. Open or closed style, customized type. Power 1000W-6000W.
- Apply to metal welding, such as SS, Carbon Steel, Al, etc.
- Precision welding, high efficiency, flexible, cost saving and long service life.
- Applicable for off-line / on-line welding of mass production.



## WZ Series - Galvanometer Laser Welding Machine

- Fiber laser. Open or closed style, customized type. Power 1000W-6000W.
- Apply to metal welding, such as SS, Carbon Steel, Al, etc.
- Precision welding, high efficiency, flexible, cost saving and long service life.
- Applicable for off-line / on-line welding of mass production, lap welding etc.



## WM Series - Mold Laser Welding Machine

- Pulse mode. Power 200W/400W.
- Standard Work Area: 300\*200mm
- Applied to thin or precision welding, welding depth 0.1-1.5mm.
- Apply to metal welding, such as SS, Carbon Steel, Al, etc.

## WT Series - YAG Transfer Laser Welder

- Pulse mode. Power 50-600 W.
- Standard Work Area: 300\*200mm (Customization)
- Capable for precision welding of 0.15mm metal sheet, and welding of hard-melt material.
- High quality optical lens, good beam quality, evenly energy.

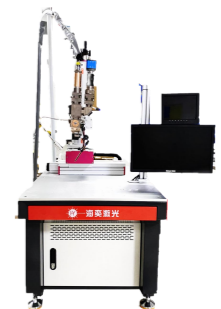


## MOPA Series - MOPA Laser Welding Machine

- Pulse mode. Power 50-500 W.
- Standard Work Area: 300\*200mm (Customization)
- Widely used for overlap welding of special-shaped material sheet welding, same metal sheet or different metal sheet, welding depth less than 0.4mm.

## QCW Series - QCW Laser Welding Machine

- Pulse & Continuous mode. Power 75-600W/ 750-6000W.
- Air or Water Cooling.
- Widely used in precision welding, such as 3C electronics, PCB welding, medical devices, Soldering, Spot/Seam Welding, Power Battery Welding, Precision Welding /Cutting, Ceramics Cutting, Alternative of Light-Pumped YAG Lasers, sensors, etc.



## SW Series - Laser Tin Welder

- Continuous / Modulation Mode. Power (Continue)50W-70W-100W.
- can cover micro precision welding to large solder joint welding, and the size of solder joint:  $\phi$  0.2mm-1.5mm.
- It is used in the electronic industry, high-precision automatic welding of PCB circuit boards, optical components, acoustic components, semiconductor refrigeration components and othe 3C electronic products, such as through-hole components, harness electronics, pin pins, etc.

## RF Series - Laser Cladding Machine

- Open or Close Optional. Power 1-20KW.
- Motion Mode: Robot or 4 or 6-axis platform.
- Applicable to metallurgy, mold, machinery manufacturing, petrochemical, light industry, military industry and other industries.



# Laser Cutting Machine



## CFA series



### Single platform large laser cutting

- Cutting range 3015 (3m\*1.5m), 4020 (4m\*2m)
- The machining accuracy is about 0.1mm, suitable for standard sheet metal cutting
- Power range: 1000W-12MW

### Linear motor precision laser cutting machine

- Marble platform, linear motor drive.
- Machining accuracy 0.005mm.
- Standard stroke: 600\*600 mm, optional 600\*900mm /900\*1300mm /400\*500mm.
- Laser power: 1500W, optional 1000W, 2000W, 3000W.
- Optional QCW150W laser with higher accuracy.
- It is applicable to precision cutting of medical devices, aerospace, etc



### Precision laser cutting machine with marble lead screw drive

- Marble gantry seal
- Standard 400 \* 600mm, optional 600 \* 600, 600 \* 900, 900 \* 1200 mm.
- Machining accuracy: 0.02mm
- General precision cutting occasions
- High efficiency, high precision, reversibility and long service life

### Gantry structure laser cutting machine

- Standard stroke 600\*600\*200mm, optional 800\*1000\*200, 600\*900\*200mm, 900\*1200\*200mm.
- Machining accuracy: 0.03-0.05mm
- Applicable for plates of different materials, titanium alloys, aluminum alloys
- Good cutting quality, fast cutting speed, high efficiency.

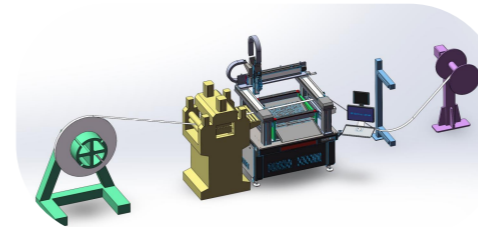


### Laser Cutting Machine for Distribution box open hole

- Standard stroke 600\*600\*200mm, optional 800\*1000\*200-500mm, 600\*900\*200-500mm, 900\*1200\*200-500mm.
- Machining accuracy: 0.03-0.05mm.
- Applicable to box top- and bottom-hole opening for different size, and integrated hole opening.

### Cross single arm structure laser cutting machine

- Standard cabinet 1000 \* 1000
- Standard 400\*200\*300mm; Maximum range: 600\*300\*300mm
- Machining accuracy: 0.03-0.05mm
- Suitable for cutting small non-standard parts.
- Good cutting quality, fast cutting speed, high efficiency



### Online laser cutting

- Standard stroke 600 \* 600 \* 200mm, optional 800 \* 1000 \* 200, 600 \* 900 \* 200mm, 900 \* 1200 \* 200mm.
- Machining accuracy: 0.03-0.05mm.
- Applicable to stamping coil sheet.

## CFB series

### Pipe laser cutting machine

- Round Pipe: Diameter  $\leq 220$ mm (Customization), Length 6000mm.
- Square Pipe: Diagonal  $\leq 220$ mm (Customization), length 6000mm.
- Positioning accuracy:  $\pm 0.05$  mm/m.
- Applicable to Round Pipe and square pipe cut.



### Pipe laser cutting machine - Special Shape fully closed

- Cutting Area: 400\*600 mm.
- Positioning accuracy:  $\pm 0.05$  mm/m.
- Applicable to small pipe cut, hole open and special shape cut.

### Pipe laser cutting machine-platform type

- Cutting Area: 400\*600 mm.
- Positioning accuracy:  $\pm 0.05$  mm/m.
- Applicable to small pipe cut, hole open and special shape cut.



## FPC series

### FPC laser cutting machine

- Cutting Area: 50\*50mm.
- Positioning Accuracy  $\leq \pm 3\mu$ m.
- Applicable to ultra-precision processing of FPC, PCB, coverlay film, FR4, rigid-flex board cutting and FPC drilling.

# Laser Cleaning Machine

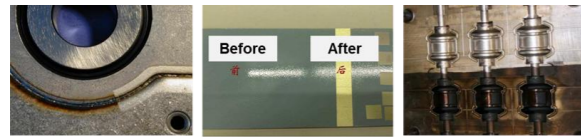


## CH Series - Laser Cleaning Machine

- Handheld design, CW Laser source. Power 1000W/1500W/2000W/3000W.
- Widely used for metal rust removal, paint removal, oil grease dirt removal, etc.
- High efficiency, flexible, cost saving, green solution and long service life.



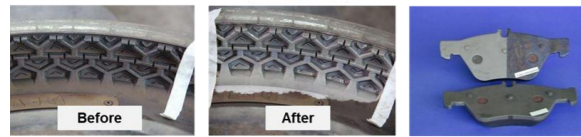
Remove rust



Clean Welding seam

Remove Paint

Clean grease& dirt



Cleaning Tire mold

Remove oxide layer



Backpack Type



Suitcase Type



A Model



C Model

## CR Series - Laser Cleaning Machine

- Handheld design, Pulse Laser source. Power 50W-500W.
- Widely used for light metal rust removal, paint removal, oil grease dirt removal, etc.
- High efficiency, flexible, cost saving, green solution and long service life.



Model A

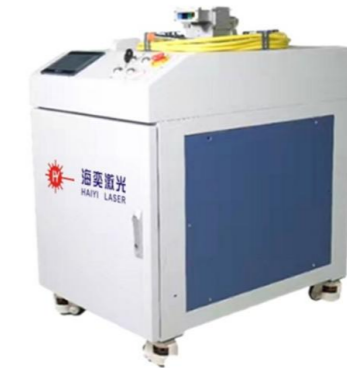


Model C

## CT Series - Laser Composite Cleaning Machine

The principle of laser composite cleaning technology is apply semiconductor continuous laser as heat conduction output, make the adhesion absorbs energy, gasification and generates plasma cloud.

- Widely used to remove resin, paint, oil stain, stain, dirt, rust, coating, coating and oxide layer on the surface of objects.
- Applied to the cleaning of thick coatings and attachments with strong adhesion.
- Applied to laser cleaning of high reflective materials such as aluminum alloy.

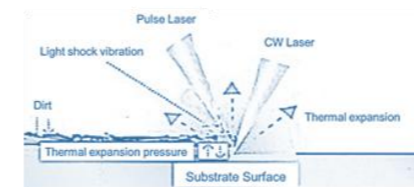


### Features and advantages:

- Increase the cleaning efficiency by two to three times with the same price.
- Improved cleaning quality, and can protect substrate from damaging.
- Higher cleaning efficiency, and more stable cleaning process.

Model	HY-CT01	HY-CT01
Laser Type	Circular ring spot Composite laser cleaning	Semiconductor continuous pulse Composite laser cleaning
Max. Laser Power	Pulse + Continuous	Pulse + Semi-conductor continuous
Scan Speed	5m/s	9.6m/s
Scan width	10-100MM	10-100MM
Cooling Method	Water & Air Cooling	

Comparison	Chemical cleaning	Mechanical grinding	Dry ice cleaning	Ultrasonic cleaning	Laser cleaning
Cleaning method	Chemical cleaning agent	Mechanical / sandpaper contact	Dry ice, non-contact	Cleaning agent, contact	Laser, non-contact
Workpiece damage	Have damage	Have damage	No damage	No damage	No damage
Cleaning efficiency	Low	Low	Middle	Middle	High
Cleaning Result	Normal, uneven	Normal, uneven	Excellent, uneven	Excellent, Small cleaning range	Excellent, High cleanliness
Clean accuracy	Uncontrollable, poor accuracy	Uncontrollable, normal accuracy	Uncontrollable, poor accuracy	Can not specify range	High controllable, high precision
Consumables	Chemical cleaning agent	Sandpaper, grinding wheel, oil-stone	Dry ice	Special cleaning fluid	Power only
Safety and E protection	Serious chemical pollution	environmental pollution	No pollution	No pollution	No pollution
Operation	High technical and protection	High manpower and protection	Simply, handheld or CNC	Simple, but need manpower	Simply, handheld or CNC
Investment and using cost	Low initial, extremely high consumables	High initial, High manpower, High consumables.	Middle initial, high consumables	Low initial, Middle consumables	High initial, no consumables



# Laser Marking Machine



Standard



Portable Type



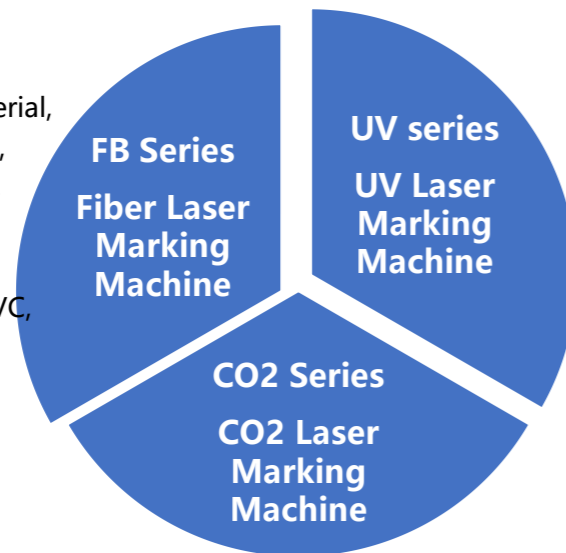
Work table Type



Flying Type

Applicable to all metal material, such as stainless steel, steel, copper, silver, gold, jewelry, aluminum alloy, mold, etc.

Applicable to non-metal: PVC, PE, ABS and other plastic product; Chip industry, Ceramic products.



Applicable to marking on paper, wood, glass, leather, etc.



Applicable to fine marking of sapphire, quartz, ceramics, glass and other super hard materials.



Handheld Type



Mini safety door Type



Work table Fiber

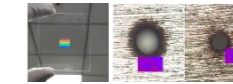


Close-door Type



## PS Series - PS Laser Marking Machine

- Picosecond laser can make Ultra-fast processing. Narrow pulse width, applicable for fine machining.
- Applicable for high precision marking and cutting of glass / display panel, high precision marking of ceramics, etc.



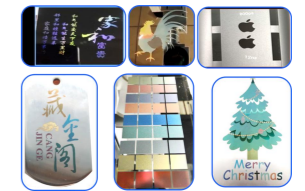
## VM Series - Visual Laser Marking Machine

- Fiber/CO2/UV.
- Widely applied in marking of mass production, such as product model, production date, serial number, bar code, QR code, etc.



## SF Series - Special Fiber Laser Marking Machine

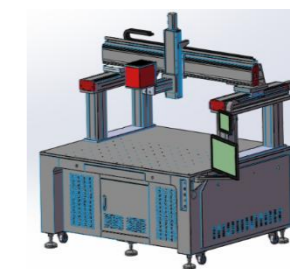
- Fiber laser Source.
- Applied to all fiber types.
- Widely used for anodized Aluminum Blackening, Bar Code Printing and Stainless-Steel Color Printing with a MOPA laser, and other special solution.



3D Standard



Dynamic Focusing



Splicing engraving



## 3D Series - 3D Laser Marking Machine

- Applied to engraving on high-low surfaces, curved surfaces and arc surfaces for metal and non-metal.
- With dynamic focusing, can make oversized marking, 600-2400mm (optional).
- Splicing engraving for large size and deep carving splicing of 600-1000mm.



# Laser Welding Machine



**3 IN 1**  
Welding/Cleaning/Cutting

## WA Series - Handheld Laser Welding Machine

- Fiber laser. Power 1000W/1500W/2000W/3000W.
- Apply to metal welding, such as SS, Carbon Steel, Al, etc.
- High efficiency, flexible, cost saving and long service life.



Air Cooling



Model 1



Model 2

Handheld Laser Welding Machine



## WF Series - Robot laser welding machine

- Fiber laser. Power 1000W-6000W.
- Apply to metal welding, such as SS, Carbon Steel, Al, etc.
- Robot arm control, high efficiency, flexible, cost saving and long service life.
- Optional for ABB, YASKAWA (arm 1.4m, 1.7m, 2m), Chinese brand, etc.



## CF Series - Platform laser welding machine

- Fiber laser. Open or closed style, customized type. Power 1000W-6000W.
- Apply to metal welding, such as SS, Carbon Steel, Al, etc.
- Precision welding, high efficiency, flexible, cost saving and long service life.
- Applicable for off-line / on-line welding of mass production.



## WZ Series - Galvanometer Laser Welding Machine

- Fiber laser. Open or closed style, customized type. Power 1000W-6000W.
- Apply to metal welding, such as SS, Carbon Steel, Al, etc.
- Precision welding, high efficiency, flexible, cost saving and long service life..
- Applicable for off-line / on-line welding of mass production, lap welding etc.



## WM Series - Mold Laser Welding Machine

- Pulse mode. Power 200W/400W.
- Standard Work Area: 300\*200mm
- Applied to thin or precision welding, welding depth 0.1-1.5mm.
- Apply to metal welding, such as SS, Carbon Steel, Al, etc.



## WT Series - YAG Transfer Laser Welder

- Pulse mode. Power 50-600 W.
- Standard Work Area: 300\*200mm (Customization)
- Capable for precision welding of 0.15mm metal sheet, and welding of hard-melt material.
- High quality optical lens, good beam quality, evenly energy.



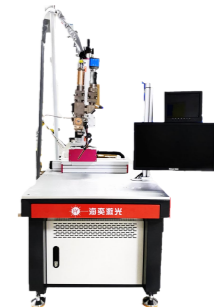
## MOPA Series - MOPA Laser Welding Machine

- Pulse mode. Power 50-500 W.
- Standard Work Area: 300\*200mm (Customization)
- Widely used for overlap welding of special-shaped material sheet welding, same metal sheet or different metal sheet, welding depth less than 0.4mm.



## QCW Series - QCW Laser Welding Machine

- Pulse & Continuous mode. Power 75-600W/ 750-6000W.
- Air or Water Cooling.
- Widely used in precision welding, such as 3C electronics, PCB welding, medical devices, Soldering, Spot/Seam Welding, Power Battery Welding, Precision Welding /Cutting, Ceramics Cutting, Alternative of Light-Pumped YAG Lasers, sensors, etc.



## SW Series - Laser Tin Welder

- Continuous / Modulation Mode. Power (Continue)50W-70W-100W.
- can cover micro precision welding to large solder joint welding, and the size of solder joint:  $\varnothing$  0.2mm-1.5mm.
- It is used in the electronic industry, high-precision automatic welding of PCB circuit boards, optical components, acoustic components, semiconductor refrigeration components and othe 3C electronic products, such as through-hole components, harness electronics, pin pins, etc.



## RF Series - Laser Cladding Machine

- Open or Close Optional. Power 1-20KW.
- Motion Mode: Robot or 4 or 6-axis platform.
- Applicable to metallurgy, mold, machinery manufacturing, petrochemical, light industry, military industry and other industries.



# Laser Cutting Machine

## CFA series



### Single platform large laser cutting

- Cutting range 3015 (3m\*1.5m), 4020 (4m\*2m)
- The machining accuracy is about 0.1mm, suitable for standard sheet metal cutting
- Power range: 1000W-12MW



### Linear motor precision laser cutting machine

- Marble platform, linear motor drive.
- Machining accuracy 0.005mm.
- Standard stroke: 600\*600 mm, optional 600\*900mm /900\*1300mm /400\*500mm.
- Laser power: 1500W, optional 1000W, 2000W, 3000W.
- Optional QCW150W laser with higher accuracy.
- It is applicable to precision cutting of medical devices, aerospace, etc



### Precision laser cutting machine with marble lead screw drive

- Marble gantry seal
- Standard 400 \* 600mm, optional 600 \* 600, 600 \* 900, 900 \* 1200 mm.
- Machining accuracy: 0.02mm
- General precision cutting occasions
- High efficiency, high precision, reversibility and long service life



### Gantry structure laser cutting machine

- Standard stroke 600\*600\*200mm, optional 800\*1000\*200, 600\*900\*200mm, 900\*1200\*200mm.
- Machining accuracy: 0.03-0.05mm
- Applicable for plates of different materials, titanium alloys, aluminum alloys
- Good cutting quality, fast cutting speed, high efficiency.



### Laser Cutting Machine for Distribution box open hole

- Standard stroke 600\*600\*200mm, optional 800\*1000\*200-500mm, 600\*900\*200-500mm, 900\*1200\*200-500mm.
- Machining accuracy: 0.03-0.05mm.
- Applicable to box top- and bottom-hole opening for different size, and integrated hole opening.



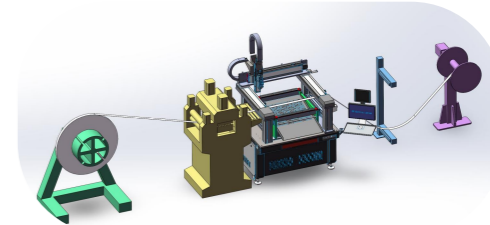
### Cross single arm structure laser cutting machine

- Standard cabinet 1000 \* 1000
- Standard 400\*200\*300mm; Maximum range: 600\*300\*300mm
- Machining accuracy: 0.03-0.05mm
- Suitable for cutting small non-standard parts.
- Good cutting quality, fast cutting speed, high efficiency



### Online laser cutting

- Standard stroke 600 \* 600 \* 200mm, optional 800 \* 1000 \* 200, 600 \* 900 \* 200mm, 900 \* 1200 \* 200mm.
- Machining accuracy: 0.03-0.05mm.
- Applicable to stamping coil sheet.



## CFB series

### Pipe laser cutting machine

- Round Pipe: Diameter  $\leq 220$ mm (Customization), Length 6000mm.
- Square Pipe: Diagonal  $\leq 220$ mm (Customization), length 6000mm.
- Positioning accuracy:  $\pm 0.05$  mm/m.
- Applicable to Round Pipe and square pipe cut.



### Pipe laser cutting machine – Special Shape fully closed

- Cutting Area: 400\*600 mm.
- Positioning accuracy:  $\pm 0.05$  mm/m.
- Applicable to small pipe cut, hole open and special shape cut.



### Pipe laser cutting machine-platform type

- Cutting Area: 400\*600 mm.
- Positioning accuracy:  $\pm 0.05$  mm/m.
- Applicable to small pipe cut, hole open and special shape cut.



## FPC series

### FPC laser cutting machine

- Cutting Area: 50\*50mm.
- Positioning Accuracy  $\pm 3\mu$ m.
- Applicable to ultra-precision processing of FPC, PCB, coverlay film, FR4, rigid-flex board cutting and FPC drilling.

